

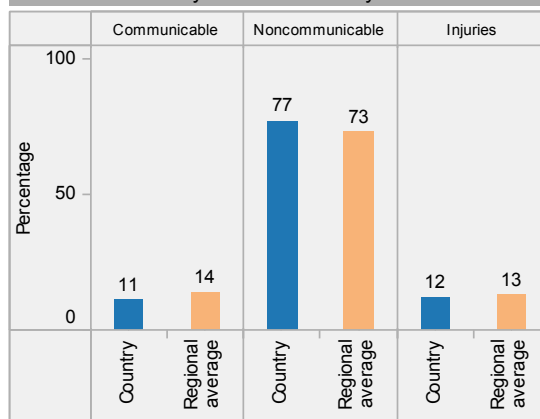
China: health profile

Selected indicators (2012)

		Country	Regional average	Global average	
General	Total population (thousands)	1384770	
	Population living in urban areas (%)	52	55	53	
	Gross national income per capita (PPP int. \$)	9040	11575	12018	
	Total fertility rate (per woman)	1.7	1.8	2.5	
Mortality and morbidity	Life expectancy at birth (years) Both sexes	75	76	70	
	Life expectancy at age 60 (years) Both sexes	19	21	20	
	Healthy life expectancy at birth (years) Both sexes	68	68	62	
	Under-five mortality rate (per 1000 live births) Both sexes	14	16	48	
	Adult mortality rate (probability of dying between 15 and 60 years per 1000 population)	Male	106	116	187
		Female	79	78	124
	Maternal mortality ratio* (per 100 000 live births)	32	45	210	
	Incidence of malaria (per 100 000 population)	0.5	84	3752	
Prevalence of tuberculosis (per 100 000 population)	99	128	169		

* Data refers to 2013.

Distribution of years of life lost by causes 2012

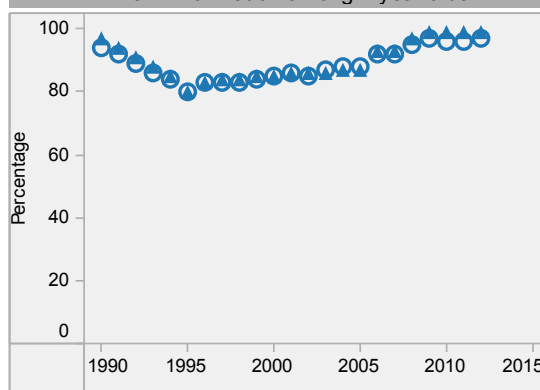


Last update: May 2014.

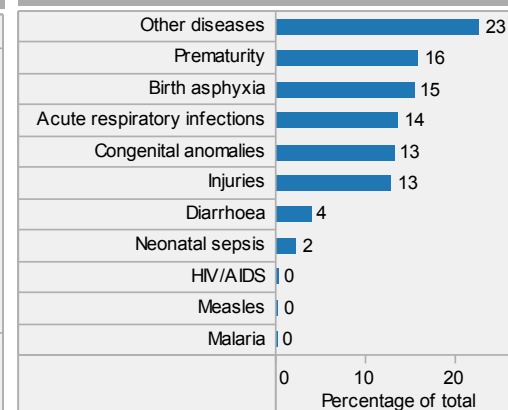
China is located in the WHO Western Pacific Region.

▲ Country
○ Regional average

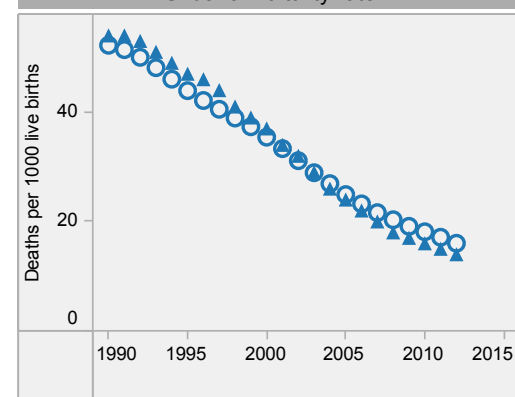
DTP3 immunization among 1-year-olds



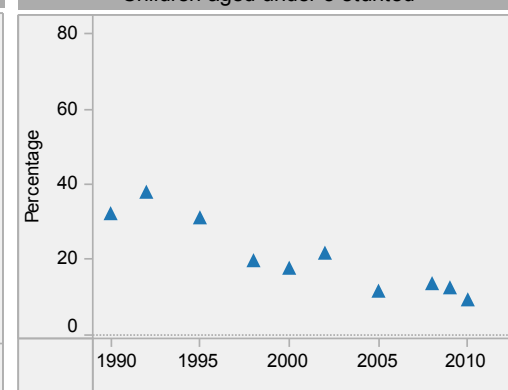
Distribution of causes of deaths in children under-5 2012



Under-5 mortality rate



Children aged under-5 stunted



China: health profile

